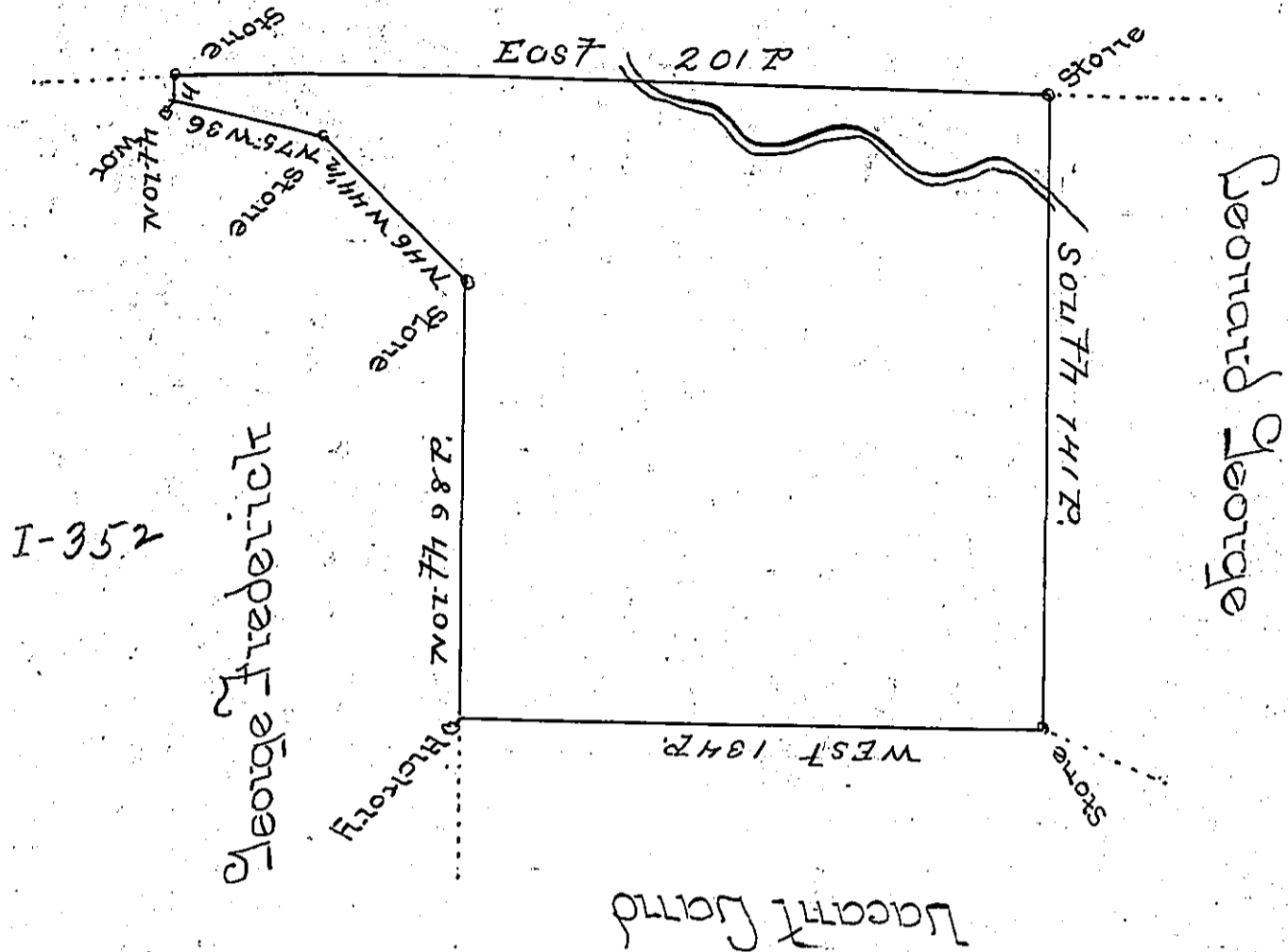


M: Thomas James Manor.

B-23-130



I-352

George Frederick

Leonard George

Leonard George

A-35-31

By virtue of a Warrant Dated the 4th Day of June 1740 and surveyed 22^d day of November 1754 to Philip Nagle in right of Philip Mower the above Described Tract of Land situate in Heidelberg Township Lancaster County containing one hundred and eighteen Acres and three Quarters of an Acre and the Allowance of six Percent for Roads

Taken from the Field works
of John Scull Deceased

Jasper Scull

The above is a True Copy of the Original remaining in the Surveyors
Generals Office at Philada the 4th Day of April 1770

IN TESTIMONY that the above is a copy of the original remaining on file in the Department of Internal Affairs of Pennsylvania, made conformably to an Act of Assembly approved the 16th day of February, 1833, I have hereunto set my Hand and caused the Seal of said Department to be affixed at Harrisburg, this fourth day of April 1899.

James W. Fatta
Secretary of Internal Affairs.